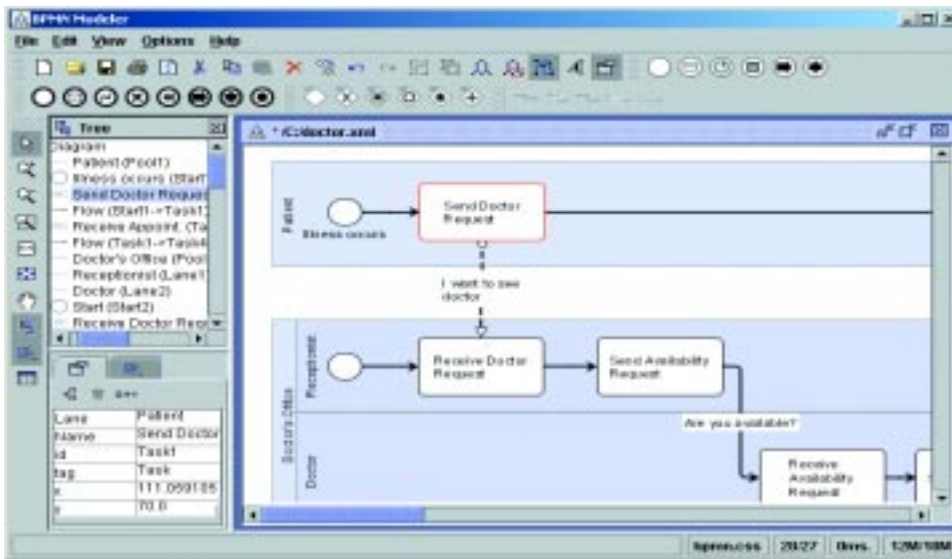


ILOG JViews Diagrammer

Making complex relationships clear



Business systems as diagrams

Diagrams are used to show objects in a business system and their interconnections. By showing the elements and their links in a network, workflow or organization, a diagram enables a company to better understand its operations. As the company grows and become more complex, it increasingly relies on diagrams to help maintain order, spot problems and find ways to improve efficiency.

Diagrams in user interfaces

When implemented as part of an application's user interface, a diagram can play a critical role – especially when modeling or monitoring a business system. For it to be useful, however, its primary elements – nodes and links – must present information meaningfully to the user. Its graphics must change to show the statuses and current properties, and redraw themselves at runtime when the underlying information changes. The layout should be clear and well organized, without overlapping graphics.

Everything for building a diagram

ILOG JViews Diagrammer provides Designer for Diagrammer, a ready-to-use, development tool for quickly configuring diagrams without coding, and a complete software development kit (SDK) for customizing functionality. Node and link graphics can be created, connected to back-end data sources and set to update automatically when data changes. Included smart layout algorithms make sure the relationships between diagram elements are clearly shown. Deployment can be in an application, applet or Web thin client. ILOG JViews Diagrammer makes configuring, integrating and deploying diagrams easy.

- Point-and-click diagram designer
- Automatic layout algorithms
- Custom and standard symbols, including BPMN
- Completely open API
- Robust MVC architecture
- Easy thin-client deployment



Designer for Diagrammer

ILOG JViews Diagrammer comes with Designer for Diagrammer, a point-and-click display editor for easily specifying most aspects of a diagram. Complete with wizards, Designer lets users set visual properties and data source parameters, including JDBC, XML and CSV. Its "Style Rule" feature lets developers define the appearance of graphics under different data conditions. The end result is a project file that is loaded into the application at runtime.

Customizable graphics

Designer comes with a powerful editing facility for creating sophisticated graphic objects for diagrams. Users can import prebuilt objects or define new ones from scratch, all without coding.

Layout algorithms

ILOG JViews Diagrammer includes a dozen layout algorithms that automatically rearrange graphic objects to make diagrams easier to understand. They include the most popular node, link and label algorithms, which can be used separately or together to create a wide variety of diagrams: hierarchical, tree, radial tree, circular and more. Subprocesses or subnetworks can be displayed and edited as subgraphs that expand and collapse in place. Graphs are kept manageable and can be expanded upon demand.

Prebuilt flow modeling and monitoring

ILOG JViews Diagrammer is well suited for applications that model or monitor processes, Web services or workflows. Its customizable, embeddable flow modeler supports several notations, including the Business Process Modeling Notation (BPMN) from BPMI.org. Monitoring applications can be built to display flows and processes with real-time status changes and screen refreshes. Processes can be displayed consistently during the modeling and the monitoring phases.

Clear separation of data from display

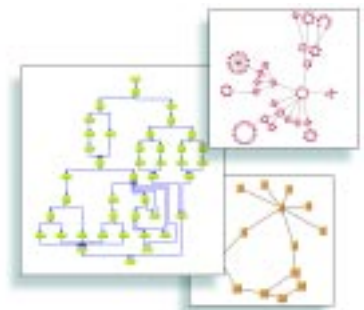
With a Swing-like model view controller (MVC) architecture, a clear separation between data and screen representations is maintained. The data model is completely open and extensible, enabling it to be connected to other application components. Notification is automatic and transparent. When the data model changes, displays are automatically updated, and when a user interacts with a display, its model changes accordingly.

Thin-client deployment and georeferencing

Diagrams can be exported as DHTML or SVG for thin-client deployment. When used with ILOG JViews Maps, ILOG JViews Diagrammer can display diagrams atop maps. Nodes are positioned according to their latitude and longitude, and links are drawn between nodes.

"Using ILOG JViews, we have an excellent platform for developing workflow features that are flexible and customizable, giving us a significant competitive advantage."

- Chuck Ganapathi
Product Management Director
Hyperwave AG



Learn more

For more information on
ILOG JViews Diagrammer,
please visit
<http://diagrammer.ilog.com/>.

ABOUT ILOG

ILOG's innovative enterprise-class software components and services have helped companies maximize their business agility and improve operating efficiency for over 10 years. Over 1,000 global corporations and more than 300 leading software vendors rely on ILOG's business rules, optimization and visualization technologies to achieve dramatic returns on investment, create market-defining products and services, and sharpen their competitive edge. For more details, please visit www.ilog.com.

ILOG Worldwide Information Center - Tel: 1-800-FOR-ILOG (US only) or 1-775-881-2800 (International) • URL: <http://www.ilog.com>
China - ILOG (S) Pte. Ltd. - Beijing Representative Office - Tel: +86 10 8518 1080 - E-mail: info@ilog.com.sg
France - ILOG S.A. - Gentilly - Tel: +33 (0)1 49 08 35 00 - E-mail: info@ilog.fr
Germany - ILOG Deutschland GmbH - Bad Homburg v.d.H. - Tel: +49 6172 40 60 - 0 - E-mail: info@ilog.de
Japan - ILOG Co., Ltd - Tokyo - Tel: +81 3 5211 5770 - E-mail: info@ilog.co.jp
Singapore - ILOG (S) Pte. Ltd. - Singapore - Tel: +65 67 73 06 26 - E-mail: info@ilog.com.sg
Spain - ILOG S.A. - Madrid - Tel: +34 91 710 2480 - E-mail: info@ilog.es
UK - ILOG Ltd. - Bracknell - Tel: +44 (0) 1344 66 16 00 - E-mail: info@ilog.co.uk
USA - ILOG, Inc. - Mountain View, CA - Tel: +1 650 567-8000 - E-mail: info@ilog.com
 Representatives and distributors in other countries

ILOG, CPLEX and the ILOG logotype are registered trademarks, and all ILOG product names are trademarks of ILOG. All other brand, product and company names are trademarks or registered trademarks of their respective holders. The information presented in this brochure is summary in nature, subject to change, non-contractual, and intended only for general information.



Changing the rules of business™