

# ILOG JViews Maps

Interactive asset-management maps  
for Web-based interfaces



## Location-based displays

Many applications must provide displays that show the locations of assets. These displays typically include maps overlaid with graphics pinpointing the positions of business objects. Some of these displays, especially those for traffic, network and supply-chain management, can be very complex, and have to redraw themselves in real time as business objects change status.

## Mapping services

ILOG JViews Maps provides comprehensive graphics and services for making map-based interfaces. Its MapBuilder creates backdrop maps by layering data from different sources and formats. Developers can then position customized, data-aware graphic objects over the maps using the open application programming interface (API). ILOG JViews Diagrammer, a separate ILOG visualization product, can be added to automatically manage the interconnections between the graphic objects. The resulting asset management map can be deployed in an application, applet or DHTML thin client.

## Full set of mapping features

ILOG JViews Maps supports a wide range of raster and vector map data formats, and can use them together seamlessly. A set of projections and geodesic data enables precise georeferencing. Advanced services include map decluttering, smart labeling and "load-on-demand," along with such standard features as panning, zooming, selection and annotation. Also included is a free CD-ROM of country and regional maps.

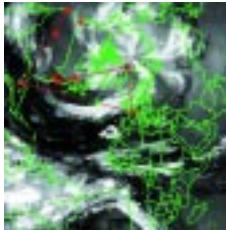
- **Asset georeferencing**
- **Common vector and raster formats**
- **Multiple map projections and geodesic data**
- **Fast load-on-demand for large data sets**
- **Country-level map CD-ROM**



## Open data access

The reader framework of ILOG JViews Maps can access and combine multiple raster and vector data sources. The rendering classes can apply a symbology to any of these sources. ILOG JViews Maps comes with readers for standard and commercial data formats that include:

- Oracle Spatial
- ShapeFile and MID/MIF
- CADRG and DTED
- GIF, JPEG and GeoTIFF



## Georeferencing services

ILOG JViews Maps provides all the georeferencing services needed for most map-based applications:

- Geodesic datum, and 16 predefined map projections
- Scale management
- Layer visibility filters
- Unit management and distance computation
- Label layout



## Management of large data sets

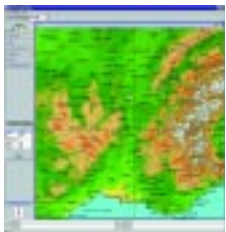
ILOG JViews Maps' load-on-demand mechanism can readily handle large sets of raster and vector maps. It is available for spatially callable data sources, including CADRG, DTED and Oracle Spatial. It can easily be extended to access tiled GIF images and user-defined map readers.



## Interactivity

ILOG JViews Maps offers the most common interaction modes, including:

- Object selection and editing
- Zoom, pan and scroll
- Overview
- Annotation



## Extensibility

The ILOG JViews Maps API comes with a protocol for customizing any part of a map-based application, adding features that include:

- Symbologies
- Interaction modes
- New projections
- User-defined map readers

## Use with ILOG JViews Diagrammer

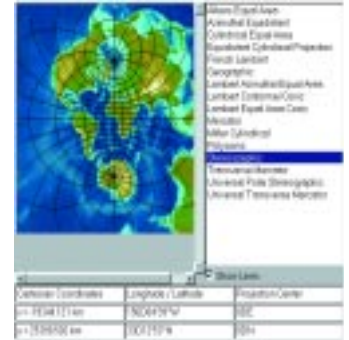
Used with ILOG JViews Maps, ILOG JViews Diagrammer can provide graph display and link routing, and its dynamic model-based "Style Rule" feature lets developers easily define how graphics will appear under different data conditions. This combination of products is used to display networks atop maps.

## ABOUT ILOG

ILOG's innovative enterprise-class software components and services have helped companies maximize their business agility and improve operating efficiency for over 10 years. Over 1,000 global corporations and more than 300 leading software vendors rely on ILOG's business rules, optimization and visualization technologies to achieve dramatic returns on investment, create market-defining products and services, and sharpen their competitive edge. For more details, please visit [www.ilog.com](http://www.ilog.com).

**ILOG Worldwide Information Center - Tel: 1-800-FOR-ILOG (US only) or 1-775-881-2800 (International) • URL: <http://www.ilog.com>**  
**China** - ILOG (S) Pte. Ltd. - Beijing Representative Office - Tel: +86 10 8518 1080 - E-mail: [info@ilog.com.sg](mailto:info@ilog.com.sg)  
**France** - ILOG S.A. - Gentilly - Tel: +33 (0)1 49 08 35 00 - E-mail: [info@ilog.fr](mailto:info@ilog.fr)  
**Germany** - ILOG Deutschland GmbH - Bad Homburg v.d.H. - Tel: +49 6172 40 60 - 0 - E-mail: [info@ilog.de](mailto:info@ilog.de)  
**Japan** - ILOG Co., Ltd - Tokyo - Tel: +81 3 5211 5770 - E-mail: [info@ilog.co.jp](mailto:info@ilog.co.jp)  
**Singapore** - ILOG (S) Pte. Ltd. - Singapore - Tel: +65 67 73 06 26 - E-mail: [info@ilog.com.sg](mailto:info@ilog.com.sg)  
**Spain** - ILOG S.A. - Madrid - Tel: +34 91 710 2480 - E-mail: [info@ilog.es](mailto:info@ilog.es)  
**UK** - ILOG Ltd. - Bracknell - Tel: +44 (0) 1344 66 16 00 - E-mail: [info@ilog.co.uk](mailto:info@ilog.co.uk)  
**USA** - ILOG, Inc. - Mountain View, CA - Tel: +1 650 567-8000 - E-mail: [info@ilog.com](mailto:info@ilog.com)  
 Representatives and distributors in other countries

ILOG, CPLEX and the ILOG logo are registered trademarks, and all ILOG product names are trademarks of ILOG. All other brand, product and company names are trademarks or registered trademarks of their respective holders. The information presented in this brochure is summary in nature, subject to change, non-contractual, and intended only for general information.



## Map CD-ROM

**ILOG JViews Maps also comes with a CD-ROM of raster and vector maps for countries and regions throughout the world.**

*"[ILOG] JViews is best-of-breed technology, and provided Tadpole with a quicker route to market for its Cartesia program. It contains much of the coding needed to manipulate mapping data."*

- David Brain

Chief Technical Officer  
Tadpole Technology Plc.

## Learn more

**For more information on ILOG JViews Maps, please visit <http://maps.ilog.com/>.**



Changing the rules of business™